

# Dressing Trolleys

Available in Standard Stainless Steel, Economy Stainless Steel and Standard Powdercoated.

Both Standard Stainless Steel and Standard Powdercoat Trolleys have round upright legs while the Economy Stainless Steel has square legs.

- Wrap around side.
- Panels have hygienic advantages minimizing the number of exposed welds and joints.
- 40cm clearance between drawer and lower shelf
- These trolleys are available in 6 different designs with a large range of widths with standardised deep of 50cm and height of 90cm (excluded 3 and 4 full width drawers).
- Dressing Trolleys are available with a wide range of accessories and can be modified to suit your requirements

## Dressing Trolleys w/ 1 full width drawer

Trolley Width available ** (W) x 50 (D)	Standard Stainless Steel	Economy Stainless Steel	Standard Powder Coated
50cm wide	OX18-0450	OXS18-0450	OX55-0450
60cm wide	OX18-0460	OXS18-0460	OX55-0460
70cm wide	OX18-0470	OXS18-0470	OX55-0470
80cm wide	OX18-0480	OXS18-0480	OX55-0480
90cm wide	OX18-0490	OXS18-0490	OX55-0490
100cm wide	OX18-0410	OXS18-0410	OX55-0410
110cm wide	OX18-0411	OXS18-0411	OX55-0411
120cm wide	OX18-0412	OXS18-0412	OX55-0412

## Dressing Trolleys w/ 2 full width drawers

Trolley Width available ** (W) x 50 (D)	Standard Stainless Steel	Economy Stainless Steel	Standard Powder Coated
50cm wide	OX18-0650	OXS18-0650	OX55-0650
60cm wide	OX18-0660	OXS18-0660	OX55-0660
70cm wide	OX18-0670	OXS18-0670	OX55-0670
80cm wide	OX18-0680	OXS18-0680	OX55-0680
90cm wide	OX18-0690	OXS18-0690	OX55-0690
100cm wide	OX18-0610	OXS18-0610	OX55-0610
110cm wide	OX18-0611	OXS18-0611	OX55-0611
120cm wide	OX18-0612	OXS18-0612	OX55-0612



OX18-0450



OXS18-0880



OX55-0650



OX18-1080

## Dressing Trolleys w/ 2 ½ width drawers

Trolley Width available ** (W) x 50 (D)	Standard Stainless Steel	Economy Stainless Steel	Standard Powder Coated
80cm wide	OX18-0880	OXS18-0880	OX55-0880
90cm wide	OX18-0890	OXS18-0890	OX55-0890
100cm wide	OX18-0810	OXS18-0810	OX55-0810
110cm wide	OX18-0811	OXS18-0811	OX55-0811
120cm wide	OX18-0812	OXS18-0812	OX55-0812

## Dressing Trolleys w/ 4 ½ width drawers

Trolley Width available ** (W) x 50 (D)	Standard Stainless Steel	Economy Stainless Steel	Standard Powder Coated
80cm wide	OX18-1080	OXS18-1080	OX55-1080
90cm wide	OX18-1090	OXS18-1090	OX55-1090
100cm wide	OX18-1010	OXS18-1010	OX55-1010
110cm wide	OX18-1011	OXS18-1011	OX55-1011
120cm wide	OX18-1012	OXS18-1012	OX55-1012



W: [www.dbhealth.com.au](http://www.dbhealth.com.au)  
 E: [customerservice@denyer.com.au](mailto:customerservice@denyer.com.au)  
 P: (02) 9638 2100  
 ABN: 37 000 459 174

Suppliers of quality products to the Healthcare Industry est 1889. Australian Owned & Operated.

# Instrument Trolleys and Accessories

- Available in Standard Stainless Steel, Economy Stainless Steel and Standard Powdercoated.
- Both Standard Stainless Steel and Standard Powdercoat Trolleys have round upright legs while the Economy Stainless Steel has square legs.

## Features:

- 2 shelves with 48cm clearance
- Wheels standard 7.5cm diameter
- Strong but lightweight welded construction
- These trolleys are available in 2 designs with a large range of widths with standardised deep of 50cm and height of 90cm (excluded 3 level without rails).
- Instrument Trolleys are available with a wide range of accessories and can be modified to suit your requirements

## Instrument Trolleys w/ 2 levels and rails

Trolley Width available ** (W) x 50 (D) x 90cm	Standard Stainless Steel	Economy Stainless Steel	Standard Powder Coated
50cm wide	OX18-0250	OXS18-0250	OX55-0250
60cm wide	OX18-0260	OXS18-0260	OX55-0260
70cm wide	OX18-0270	OXS18-0270	OX55-0270
80cm wide	OX18-0280	OXS18-0280	OX55-0280
90cm wide	OX18-0290	OXS18-0290	OX55-0290
100cm wide	OX18-0210	OXS18-0210	OX55-0210
110cm wide	OX18-0211	OXS18-0211	OX55-0211
120cm wide	OX18-0212	OXS18-0212	OX55-0212



OX18-0250



OX18-0250

## Accessories for Dressing and Instrument Trolleys

A range of options are available to fitted to the Dressing and Instrument Trolleys which include:

- Lift-up Side Shelves
- Sharps Container Brackets (please provide sharps container type)
- IV Poles
- Drawer Dividers
- Drawer Locks
- O<sup>2</sup> Cylinder Holder, Cup and Glove Dispensers
- Garbage Bag Holder
- Castors

If you have requirements for a trolley custom features please contact with your specific requirements.

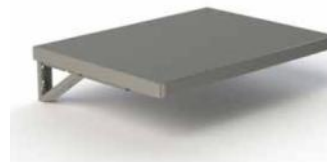


Drawer Storage Dividers

Sharps Container Brackets



Wire Document Holder



Lift Up Side shelf



Bolt on IV Pole Bracket



W: [www.dbhealth.com.au](http://www.dbhealth.com.au)  
 E: [customerservice@denyer.com.au](mailto:customerservice@denyer.com.au)  
 P: (02) 9638 2100  
 ABN: 37 000 459 174

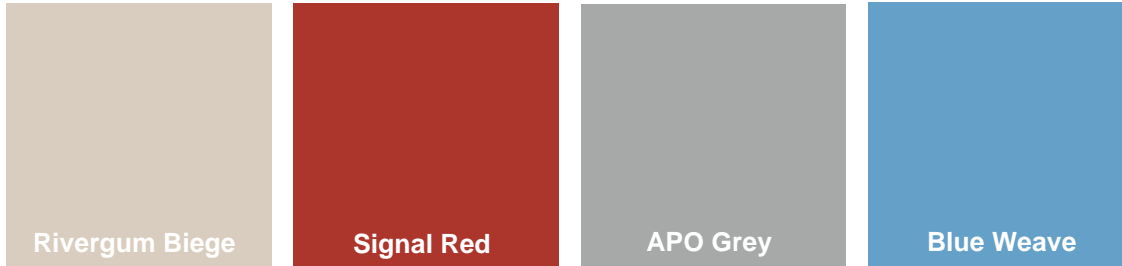
Suppliers of quality products to the Healthcare Industry est 1889. Australian Owned & Operated.

# Colour Options for Medical Carts

## Oxford Powdercoat Colours

Below are the colours for Oxford Products along with white gloss. Please colours are approximate representations of the final powdercoating colour.

When selecting colour please advise drawer colour and body colour.



Standard Powdercoat Colours



Non-Standard Powdercoat Colours (additional cost may apply)

## Flexicart Powdercoat Colours

Below are the standard colours for Flexicart Medication Trolleys along with White and Signal Red.

