

# Inventory and PPE Trolleys plus other Storage Solutions

Inventory and PPE Carts and Storage Solutions includes

- Overbed and Wall Mounted Inventory and PPE Holders
- Bed Pan and bottle Rack Holder
- Overbed and Wall mounted Chart holders
- Distribution Trolley, Returns Trolley and Stainless Steel Suture Trolley
- MediMesh Stainless Steel Wire Baskets Storage Systems
- Medimesh Stainless Steel Shelving Solutions



Suppliers of quality products to the Healthcare Industry Est 1889.  
Australian Owned & Operated.

Web [dbhealth.com.au](http://dbhealth.com.au)

Email [customerservice@denyer.com.au](mailto:customerservice@denyer.com.au)

Freecall: 1800 451 446

ABN: 37 000 459 174

## Hanging or Wall Mounted PPE and Inventory Dispensers

Wire PPE and Inventory Dispensers available in White Plastic Coat Steel or Stainless Steel.  
Please inform DB Health of which type when placing your order

Custom made products can be made to your requirements\*

|   |        |
|---|--------|
| WALL MOUNTED Single Glove Box Holder (295mmW x 170mmH)                        | CW708  |
| WALL MOUNTED 2 Tier Glove Box Holder (295mmW x 300mmH)                        | CW711  |
| WALL MOUNTED 3 Tier Glove Box Holder (295mmW x 480mmH)                        | CW704  |
| WALL MOUNTED 4 Tier Glove Box Holder (295mmW x 660mmH)                        | CW705  |
| WALL MOUNTED SURGICAL SCUB UNIT - HOLDS 500ML ROUND BOTTLES                   | CW709  |
| WALL MOUNTED THEFT RESISTANT HAND GEL HOLDER**                                | CW716W |
| WALL MOUNTED TISSUE BOX HOLDER 13CM (W) x 8CM (D) X 180(H)                    | CW717  |
| WALL MOUNTED GOWNS HOLDER 11.5CM (W) X 12CM (D) X 44CM (H)                    | CW727  |
| WALL MOUNTED TUFFY WIPE DISPENSER HOLDER 21.5CM (W) X 21.5CM (D) X 13.5CM (H) | CW733  |
| WALL MOUNT 8LT SHARPS CONTAINER HOLDER 30CM (W) X 12CM (D) X 25 (H)           | CW734  |
| WALL MOUNTED 1.4LT SHARPS CONTAINER HOLDER 9.5CM (W) X 9.5CM (D) X 19CM (H)   | CW735  |
| WALL MOUNTED OXIVIR WIPES HOLDER 12.5CM (D) X 12.5CM (W)                      | CW750  |
|   |        |
| OVER BED URINAL HOLDER 11CM (W) X 11CM (D) X 20CM (H)                         | CW702  |
| OVER BED ISOWIPES HOLDER 11.5CM (W) X 11.5CM (D) X 8.5CM (H)                  | CW703  |
| OVER BED HAND GEL HOLDER  | CW712  |
| OVER BED CATHETER BAG HOLDER  | CW714  |
| OVER BED THEFT RESISTANT HAND GEL HOLDER**                                    | CW716B |
| HANGING FEEDING BOTTLE HOLDER   | CW715  |
|   |        |
| WALL MOUNTED WIRE BASKETS - MADE TO YOUR MEASUREMENTS                         | CW740  |



CW705



CW727



CW702



CW715

\*If customisable products are required please supply the dimension / size and quantities required.

\*\* Theft resistant hand gel holder is designed for 500ml bottles of Microshield Angel Blue and similar shaped 500ml bottles.

## Bedpan and Bottle Rack Holders

The Bedpan and Bottle rack is a Stainless Steel Rack designed to fit bedpans and urine bottles.

Wall mounted

Removable bottom hanging drip tray.

Custom Bench Mounted version available on request.

|  |           |
|--|-----------|
| BEDPAN & BOTTLE RACK - EMERY S/S 4 UNIT #54 X 26 X 52CM (EACH) | HQSS104-4 |
| BEDPAN & BOTTLE RACK - EMERY S/S 6 UNIT #78 X 26 X 52CM (EACH) | HQSS104-6 |



DB Health has a extensive range of Reusable and Single Use Medical Grade Polypropylene Hollowware.  
These items include:- Male and Female Urinals, Theatre Bowls, Lotion Bowls, Gallipots, Kidney Dishes, Disinfecting Tanks and a variety of Compartment Trays and Instrument Trays.

## Overbed and Wall Mounted Chart Holder

For patient records and folders

Powder coated steel

Hangs on rails/bed-ends with diameters up to 50mm or Wall mounted  
390mm (W) x 410 (H) - 380mm x 73 mm opening

Oxford Overbed Rail Chart Holders - A4 size, made from white polycarbonate (3mm thick) with either 2 Rings or Bulldog Clip

Comwire overbed or wall mounted chart holders

2 width available 32cm x 30cm or extra wide 40cm x 75cm x 31.5cm



ALB0120CH



OX11-3036



|  |           |
|--|-----------|
| CHART HOLDER - HANGING POWDER COATED STEEL (EACH)                  | ALB0150CH |
| CHART HOLDER - WALL MOUNTED POWDER COATED STEEL (EACH)             | ALB0120CH |
| CHART HOLDER - OXFORD OVER BED-END RING TYPE (EACH)                | OX11-1000 |
| CHART HOLDER - OXFORD OVER BED-END BULLDOG TYPE (EACH)             | OX11-3036 |
| CHART HOLDER - COMWIRE OVER BED-END 32CM (W) X 30CM (H)            | CW707     |
| CHART HOLDER - COMWIRE WALL MOUNT MOUNTED 32CM X 30CM (H)          | CW706W    |
| CHART HOLDER - COMWIRE OVER BED-END EXTRA WIDE 40CM X 7CM X 31.5CM | CW713     |
| CHART HOLDER - COMWIRE WALL MOUNTED EXTRA WIDE 40CM X 7CM X 31.5CM | CW713W    |



CW713

## Stock Distribution Trolley

Stock distribution Trolley is made from Zinc Plated Mild Steel

- 2 Shelves with 2 front doors and 1 back door
- 125mm Castors with 2 locking brake wheel and 2 fixed
- 75cm (W) x 82cm (D) x 182cm (H)



|   |            |
|---|------------|
| STOCK DISTRIBUTION TROLLEY - EMERY 75 X 82 X 182CM (H) (EACH) | HQSP567-13 |
|---|------------|

## Stainless Steel Returns Trolley

Stainless Steel Return Trolley holds 6 bins - 4 x Bins 578 x 384 x 166, 2 x bins 578 x 384 x 318.

- Handles on both ends
- 4 x 100mm castor
- 4 x buffers
- Lids to fit buckets
- 86.5cm (W) x 60cm (D) x 96cm (H)



|   |         |
|---|---------|
| STAINLESS STEEL RETURNS TROLLEY - EMERY 86.5 X 60 X 96CM (H) (EACH) | HQSP399 |
|---|---------|



## Stainless Steel Suture Trolley

- 4 Tier Suture Bay – Mobile
- Dimensions: 450D x 1250W x 2000H (mm)
- 4 x Angled Suture Shelves with 12 x Shelf Dividers (three per Shelf) allow for effortless viewing and accessibility, all while maintaining sterility and cleanliness.
- 1 x Top flat shelf



SUTURE CART - EMERY SLANTED 4 LVL W/ 2 DIVIDERS MOBILE (EACH)

HQRPSB06

## MediMesh Wire Baskets Storage Systems

MEDIMESH provides innovative storage solutions for your health facility. The wire shelving can be quickly and easily changed to meet your needs. The range of functional accessories offers a vast variety of configuration possibilities.

MEDIMESH requires little or no tools for assembly.

MEDIMESH design minimises dust collection on the surface and easy to wipe down whilst maintaining excellent airflow. Static shelving, mobile shelving and wall framed storage for hanging wire mesh baskets are available.

These storage solutions 304 Stainless Steel.



HQSSBRT



HQSSDIV4520



HQSSDIV4510



2 Ring label holder



| Product code  | Description  |
|---------------|--|
| HQSSBRT       | BASKET WALL FRAME - S/S #485X485MM #7 RAILS (EACH) |
| HQSSBSK413010 | BASKET - S/S MEDIMESH #410X300X105                 |
| HQSSBSK413021 | BASKET - S/S MEDIMESH #410X300X215                 |
| HQSSBSK414510 | BASKET - S/S MEDIMESH #410X450X105                 |
| HQSSBSK414521 | BASKET - S/S MEDIMESH #410X450X215                 |
| HQSSDIV3010   | DIVIDER - S/S MEDIMESH #300X100MM (EACH)           |
| HQSSDIV3020   | DIVIDER - S/S MEDIMESH #300X215MM (EACH)           |
| HQSSDIV4510   | DIVIDER - S/S MEDIMESH #450X100MM (EACH)           |
| HQSSDIV4520   | DIVIDER - S/S MEDIMESH #450X215MM (EACH)           |
| HQMM-LABEL-25 | LABEL HOLDER - MEDIMESH 25MM LABEL HOLDER 2 RING   |
| HQMM-LABEL-40 | LABEL HOLDER - MEDIMESH 40MM LABEL HOLDER 2 RING   |
| HQMM-LABEL-60 | LABEL HOLDER - MEDIMESH 60MM LABEL HOLDER 2 RING   |

# Basket Trolley and Rack Trolleys for MediMesh Storage System

Easy way to move baskets that have products set up in an orderly manner  
Quick and easy to keep clean  
Safe to move as the unit provides a clear vision for the operator

## HQSP617 - Basket transport Trolley

Welded Stainless frame, 3 x Stainless Steel Basket Racks  
46cm (W) x 60cm (D) x 165cm (H)  
4 x 100mm Swivel castors

## HQSP617-1 Basket Rack Trolley

Welded Stainless Steel Frame, 8 x Stainless Steel Basket Racks  
4 x 125mm locking castors  
95cm (W) x 70cm (D) x 132cm (H)  
Designed to Fit MediMesh Baskets; 2 x Panel Wide Back to Back  
Fit either:  
16x MM-SS-BSK-8m-410-300-215 MediMesh Baskets  
Or  
24x MM-SS-BSK-8m-410-300-105 MediMesh Baskets - Baskets Ordered Separately



HQSP617



HQSP617-1

|  |           |
|--|-----------|
| BASKET TRANSPORT TROLLEY - EMERY SS W/ SS RACKS 46 X 60 X 165 (EACH) | HQSP617   |
| BASKET RACK TROLLEY - EMERY SS WSS RACKS 95 x 70 x 132cm (EACH)      | HQSP617-1 |

## MediMesh Shelving Solutions

We have many configurations available! Looking for something completely tailor-made?  
Please note, when castors are added to the unit, 165mm will be added to the overall height of the unit

Wire mesh with a stainless steel finish

Dust and dirt-free displays.

The height of the shelves to be easily adjusted

Features heavy-duty wires with strengthening ribs and reinforced shelf edges

The Shelves slide down the Upright Posts and over the Plastic Collars

Clips to lock the shelves into position

Build your own Item MediMesh Number, as follows:

MM = MediMesh

Select from the following:

Stainless Steel SS

450 or 600 = Shelf Depth

1000, 1250, 1500 or 1750mm Length

1000, 1800 or 2000mmH Posts

Then choose the amount of shelves (Tiers) required, there can be from 2 to 7 depending on the height of the post.

Example:

MM-SS-450-1000-4T

Or, if you require Castors add an M = for Mobile to the end of the Item Number, Example:

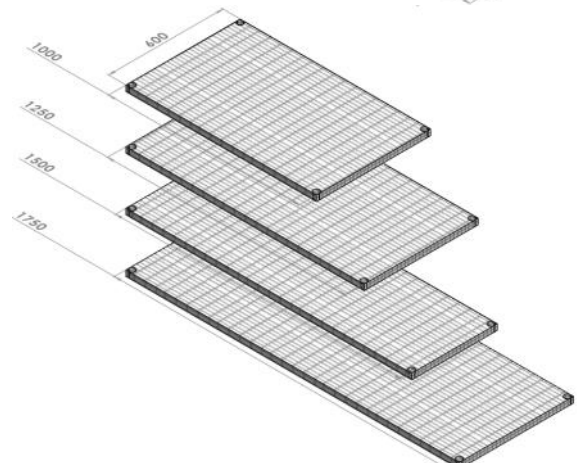
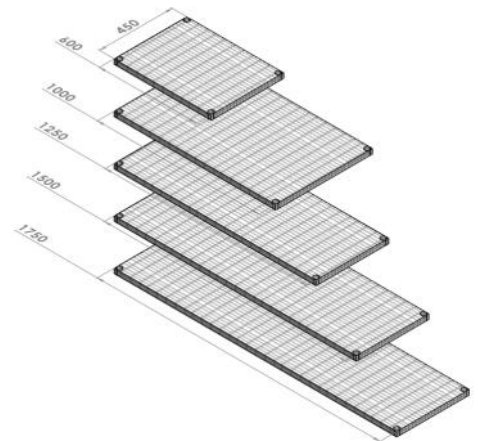
MM-SS-450-1000-4TM

SWL – Safe Working Load

MEDIMESH SWL WEIGHT CAPACITY:

Each shelf max capacity is 150kg (static) with the total unit max capacity 900kg (static)

In a mobile environment, the 150kg still applies but we would not recommend any more than 250kg overall and recommend the majority of the

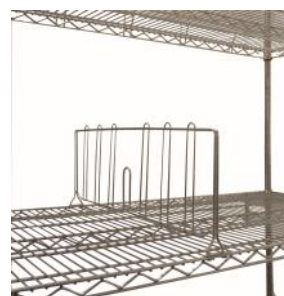


# MediMesh Shelving Solutions

|   |                 |
|---|-----------------|
| MEDIMESH LEDGE 100MM X 450MM                | HQMML-100X450   |
| MEDIMESH LEDGE 100MM X 600MM                | HQMML-100X600   |
| MEDIMESH LEDGE 100MM X 1000MM               | HQMML-100X1000  |
| MEDIMESH LEDGE 100MM X 1250MM               | HQMML-100X1250  |
| MEDIMESH LEDGE 100MM X 1500MM               | HQMML-100X1500  |
| MEDIMESH LEDGE 100MM X 1750MM               | HQMML-100X1750  |
| MEDIMESH LEDGE 280MM X 450MM                | HQMML-280X450   |
| MEDIMESH LEDGE 280MM X 600MM                | HQMML-280X600   |
| MEDIMESH LEDGE 280MM X 1000MM               | HQMML-280X1000  |
| MEDIMESH LEDGE 280MM X 1250MM               | HQMML-280X1250  |
| MEDIMESH LEDGE 280MM X 1500MM               | HQMML-280X1500  |
| MEDIMESH LEDGE 280MM X 1750MM               | HQMML-280X1750  |
| MEDIMESH DIVIDER 100MM X 450MM              | HQMMD-100X450   |
| MEDIMESH DIVIDER 100MM X 600MM              | HQMMD-100X600   |
| MEDIMESH DIVIDER 230MM X 450MM              | HQMMD-230X450   |
| MEDIMESH DIVIDER 230MM X 600MM              | HQMMD-230X600   |
| MEDIMESH LEAN COLOUR STRIP POST CLIP BLUE   | HQMM-LS-CLIPB   |
| MEDIMESH LEAN COLOUR STRIP POST CLIP GREEN  | HQMM-LS-CLIPG   |
| MEDIMESH LEAN COLOUR STRIP POST CLIP RED    | HQMM-LS-CLIPR   |
| MEDIMESH LEAN COLOUR STRIP POST CLIP YELLOW | HQMM-LS-CLIPY   |
| MEDIMESH LABEL HOLDERS BLUE                 | HQMM-LB         |
| MEDIMESH LABEL HOLDERS CLEAR                | HQMM-LC         |
| MEDIMESH WALL MOUNTING BRACKET              | HQMM-SS-WS-01   |
| MEDIMESH PUSH HANDLE 450MM                  | HQMM-SSPH-450   |
| MEDIMESH PUSH HANDLE 600MM                  | HQMM-SSPH-600   |
| MEDIMESH TROLLEY COVER CLEAR                | HQMM-COVER-**** |



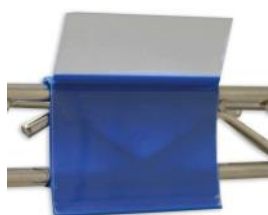
Ledges are available in 2 heights (100mm and 280mm) and 6 widths (450mm, 600mm, 1000mm, 1250mm, 1500mm & 1750mm)



Dividers are available in two heights (100mm & 230mm) and 2 widths (450mm & 600mm)



Medimesh Lean Colour Strip Post Clip  
Add easy identification of product  
Includes Velcro Pad to attach to Lean Colour Strip, three(3) per Colour strip



Label Holders: (Blue) or (Clear)  
Start labelling your shelves for clear identification of products. This helps with Lean Storage practices.  
Available in 2 colours - Clear or Blue in a variety of lengths



COVER 450-1000 Trolley Cover Clear  
(Please specify the exact height of the post required, this is important so that the cover is the exact same size as the post and therefore allows the wheel free movement, this will also keep the inside of the cover clean from wheel dirt and grime)



MediMesh Wall bracket



Push Handle: These are available in 450mm or 600mm