

# Medical Carts and Trolley Catalogue

**Instrument and Dressing Trolleys**  
Page 2-3



**General Purpose Trolleys**  
Page 4-6



**Laundry and Waste Trolleys**  
Page 7-9



**Medication Trolleys**  
Page 10-11



**Procedure Trolleys**  
Page 12-14



**Operating Theatre Trolleys**  
Page 15-17



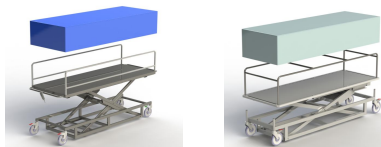
**CSSD Tables and Carts**  
Page 18



**Maternity Bassinette Trolleys and Cots**  
Page 19-20



**Mortuary Trolleys**  
Page 21



# Dressing Trolleys

Available in Standard Stainless Steel, Economy Stainless Steel and Standard Powdercoated.

Both Standard Stainless Steel and Standard Powdercoat Trolleys have round upright legs while the Economy Stainless Steel has square legs.

- Wrap around side.
- Panels have hygienic advantages minimizing the number of exposed welds and joints.
- 40cm clearance between drawer and lower shelf
- These trolleys are available in 6 different designs with a large range of widths with standardised deep of 50cm and height of 90cm (excluded 3 and 4 full width drawers).
- Dressing Trolleys are available with a wide range of accessories and can be modified to suit your requirements

## Dressing Trolleys w/ 1 full width drawer

Trolley Width available ** (W) x 50 (D)	Standard Stainless Steel	Economy Stainless Steel	Standard Powder Coated
50cm wide	OX18-0450	OXS18-0450	OX55-0450
60cm wide	OX18-0460	OXS18-0460	OX55-0460
70cm wide	OX18-0470	OXS18-0470	OX55-0470
80cm wide	OX18-0480	OXS18-0480	OX55-0480
90cm wide	OX18-0490	OXS18-0490	OX55-0490
100cm wide	OX18-0410	OXS18-0410	OX55-0410
110cm wide	OX18-0411	OXS18-0411	OX55-0411
120cm wide	OX18-0412	OXS18-0412	OX55-0412

## Dressing Trolleys w/ 2 full width drawers

Trolley Width available ** (W) x 50 (D)	Standard Stainless Steel	Economy Stainless Steel	Standard Powder Coated
50cm wide	OX18-0650	OXS18-0650	OX55-0650
60cm wide	OX18-0660	OXS18-0660	OX55-0660
70cm wide	OX18-0670	OXS18-0670	OX55-0670
80cm wide	OX18-0680	OXS18-0680	OX55-0680
90cm wide	OX18-0690	OXS18-0690	OX55-0690
100cm wide	OX18-0610	OXS18-0610	OX55-0610
110cm wide	OX18-0611	OXS18-0611	OX55-0611
120cm wide	OX18-0612	OXS18-0612	OX55-0612



OX18-0450



OXS18-0880



OX55-0650



OX18-1080

## Dressing Trolleys w/ 2 1/2 width drawers

Trolley Width available ** (W) x 50 (D)	Standard Stainless Steel	Economy Stainless Steel	Standard Powder Coated
80cm wide	OX18-0880	OXS18-0880	OX55-0880
90cm wide	OX18-0890	OXS18-0890	OX55-0890
100cm wide	OX18-0810	OXS18-0810	OX55-0810
110cm wide	OX18-0811	OXS18-0811	OX55-0811
120cm wide	OX18-0812	OXS18-0812	OX55-0812

## Dressing Trolleys w/ 4 1/2 width drawers

Trolley Width available ** (W) x 50 (D)	Standard Stainless Steel	Economy Stainless Steel	Standard Powder Coated
80cm wide	OX18-1080	OXS18-1080	OX55-1080
90cm wide	OX18-1090	OXS18-1090	OX55-1090
100cm wide	OX18-1010	OXS18-1010	OX55-1010
110cm wide	OX18-1011	OXS18-1011	OX55-1011
120cm wide	OX18-1012	OXS18-1012	OX55-1012



W: [www.dbhealth.com.au](http://www.dbhealth.com.au)  
 E: [customerservice@denyer.com.au](mailto:customerservice@denyer.com.au)  
 P: (02) 9638 2100  
 ABN: 37 000 459 174

Suppliers of quality products to the Healthcare Industry est 1889. Australian Owned & Operated.

# Instrument Trolleys and Accessories

- Available in Standard Stainless Steel, Economy Stainless Steel and Standard Powdercoated.
- Both Standard Stainless Steel and Standard Powdercoat Trolleys have round upright legs while the Economy Stainless Steel has square legs.

## Features:

- 2 shelves with 48cm clearance
- Wheels standard 7.5cm diameter
- Strong but lightweight welded construction
- These trolleys are available in 2 designs with a large range of widths with standardised deep of 50cm and height of 90cm (excluded 3 level without rails).
- Instrument Trolleys are available with a wide range of accessories and can be modified to suit your requirements

## Instrument Trolleys w/ 2 levels and rails

Trolley Width available ** (W) x 50 (D) x 90cm (H)	Standard Stainless Steel	Economy Stainless Steel	Standard Powder Coated
50cm wide	OX18-0250	OXS18-0250	OX55-0250
60cm wide	OX18-0260	OXS18-0260	OX55-0260
70cm wide	OX18-0270	OXS18-0270	OX55-0270
80cm wide	OX18-0280	OXS18-0280	OX55-0280
90cm wide	OX18-0290	OXS18-0290	OX55-0290
100cm wide	OX18-0210	OXS18-0210	OX55-0210
110cm wide	OX18-0211	OXS18-0211	OX55-0211
120cm wide	OX18-0212	OXS18-0212	OX55-0212



OX18-0250



OX18-0250

## Accessories for Dressing and Instrument Trolleys

A range of options are available to fitted to the Dressing and Instrument Trolleys which include:

- Lift-up Side Shelves
- Sharps Container Brackets (please provide sharps container type)
- IV Poles
- Drawer Dividers
- Drawer Locks
- O<sup>2</sup> Cylinder Holder, Cup and Glove Dispensers
- Garbage Bag Holder
- Castors

If you have requirements for a trolley custom features please contact with your specific requirements.

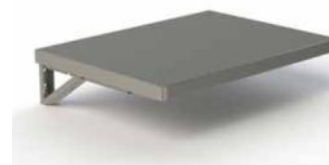


Drawer Storage Dividers

Sharps Container Brackets



Wire Document Holder



Lift Up Side shelf



Bolt on IV Pole Bracket

# General Purpose Trolleys

## Nally Bin Trolley

The Nally Bin Trolley is designed to hold 2 x 32L Nally Bins.

- Push handles on either end.
- Shelves: clearance between top and bottom Nally bins is 44cm.
- Bin Dimensions: 64 (W) x 41 (L) x 21cm (H).
- Bins are included with trolley.
- Wheels: 12.5cm standard w/ 2 braking and bumpers
- Available in Stainless Steel only.



OX23-5700

## Stainless Steel Multi Purpose Trolleys

- Available with either 2 or 3 Shelves
- Push handles either side
- Recessed shelves
- Wheels: Standard 12.5cm w/ 2 braking and bumpers
- Standard Multi-purpose—113 x 60 x 110cm with 2 or 3 shelves.
- 2 shelves model has 42cm clearance and 3 shelves model has 21cm clearance.
- Heavy Duty Multi-purpose—90 x 60 x 100cm with 2 or 3 shelves.
- 2 shelves model has 59cm clearance and 3 shelves model has 28cm clearance.



OX23-5390

Description	Code
NALLY BIN TRLY - OXFORD S/S W/ 2 BINS #72 X 42 X 105CM (EACH)	Ox23-5700
MULTI-PURPOSE TROLLEY - OXFORD S/S #2 SHELVES #113 X 53 X 96.5CM (EACH)	OX23-5010
MULTI-PURPOSE TROLLEY - OXFORD S/S #3 SHELVES #113 X 53 X 96.5CM (EACH)	OX23-5015
HEAVY DUTY TROLLEY - OXFORD S/S #2 SHELVES #90 X 60 X 100CM (EACH)	OX23-5390
HEAVY DUTY TROLLEY - OXFORD S/S #3 SHELVES #90 X 60 X 100CM (EACH)	OX23-5392

## Stainless Steel Clearing Trolley

- Push handles on both ends
- Available with either 2 or 3 shelves
- Wheels: Standard 12.5 cm
- 2 shelf unit has 43cm clearance
- 3 Shelves each with 30cm clearance
- Dimensions: 95.2cm W x 51cm D x 93cm H



OX23-5000

## Flow Chart Table

- Wheels: 5cm standard
- Tilting table top for flexibility when writing or when not in use.
- Gas spring height adjustment with range of 84 - 114cm.
- Positive tilt mechanism w/ safety lock for horizontal position.
- Three bulldog clips positioned at the top of the table top.
- Pen Holder at bottom of table top.



OX20-1100M

Description	Code
CLEARING TROLLEY - OXFORD S/S #2 SHELVES # 90 X 60 X 86CM (EACH)	OX23-5000
CLEARING TROLLEY - OXFORD S/S #3 SHELVES # 90 X 60 X 86CM (EACH)	OX23-5005
FLOW CHART TABLE - OXFORD LARGE S/S W/ BASKET (EACH)	OX20-1100M



# General Purpose Trolleys

## Chart Trolley

Chart Trolley are designed to easily move a large number of charts as required. These trolleys when ordered come with the requisite number of chart holders. There are 3 models of Chart Trolleys which are 12, 24 and 36.

- Shelves: 1 x 25cm clearance from bottom shelf to bottom of chart holders.
- Wheels: 12.5cm standard w/ 2 braking and wall bumpers
- Optional locking lid
- Available in Stainless Steel or Powder Coated

OX10-1400



Description	Code
CHART TROLLEY - OXFORD S/S W/ 12 CHART HOLDERS #41.2 X 50 X 90CM (EACH)	OX10-1100
CHART TROLLEY - OXFORD P/C W/ 12 CHART HOLDERS #41.2 X 50 X 90CM (EACH)	OX55-1100
CHART TROLLEY - OXFORD S/S W/ 24 CHART HOLDERS #75.2 X 50 X 90cm(EACH)	OX10-1200
CHART TROLLEY - OXFORD P/C W/ 24 CHART HOLDERS #75.2 X 50 X 90cm(EACH)	OX55-1200
CHART TROLLEY - OXFORD S/S W/ 36 CHART HOLDERS #112 X 50 X 90cm(EACH)	OX10-1300
CHART TROLLEY - OXFORD P/C W/ 36 CHART HOLDERS #112 X 50 X 90cm(EACH)	OX55-1300
ACCESSORY - OXFORD CHART HOLDER S/S (EACH)	OX10-1400
ACCESSORY - OXFORD CHART HOLDER P/C (EACH)	OX10-1500



OX55-1100

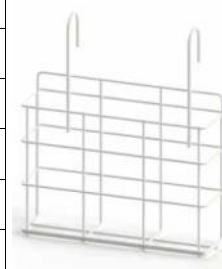
## Overbed & Wall Mounted Chart Holders

Overbed Rail Chart Holders - A4 size, made from white polycarbonate (3mm thick) with either 2 Rings or Bulldog Clip

Nylon Coated Wire Chart Holder (if hooks are required please advise width needed):

Small size (317 x 228 x 80mm) available with hooks to hang overbed rails or wall mounted  
 Large size (505 x 322 x 86mm) available with hooks to hang overbed rails or wall mounted.

Description	Code
CHART HOLDER - OXFORD OVER BED-END RING TYPE (EACH)	OX11-1000
CHART HOLDER - OXFORD OVER BED-END BULLDOG TYPE (EACH)	OX11-3036
CHART HOLDER - MASCOT WIRE BASKET NYLON SMALL (EACH)	OX11-3040
CHART HOLDER - MASCOT WIRE BASKET NYLON LARGE (EACH)	OX11-3040L
CHART HOLDER - MASCOT WIRE BASKET NYLON SMALL #WALL MOUNT (EACH)	OX11-3040W
CHART HOLDER - MASCOT WIRE BASKET NYLON SMALL #WALL MOUNT (EACH)	OX11-3040LW



OX11-3040



OX11-3036

# General Purpose Trolleys

## Cylinder Holders

Oxygen Cylinder Holder Stationary and Mobile is designed to hold either 6 or 12 x C-size Oxygen Cylinders.

- Handle at either end, Only available in Stainless Steel.
- Mobile—12.5cm standard wheels and Stationary—has rubber end caps.

## Cylinder Trolleys

Oxygen Bottle Trolleys are available to move a single Oxygen Cylinder they are available in different models to move Size C, D and G. Available with 15cm Heavy Duty Wheels in either Stainless Steel or Powder Coated.

## Detachable Cylinder Bottle Holder

Oxygen Bottle Holder Detachable for Size C Bottle - Available in Stainless Steel only. Designed to be used on a IV Pole Bracket.



OX30-3252

Description	Code
CYLINDER HOLDER - OXFORD 6 UNIT STATIONARY # 47 X 30 X 75CM (EACH)	OX30-0100
CYLINDER HOLDER - OXFORD 12 UNIT STATIONARY #86 X 30 X 75CM (EACH)	OX30-0120
CYLINDER HOLDER - OXFORD 6 UNIT MOBILE #47 X 30 X 91CM (EACH)	OX30-0110
CYLINDER HOLDER - OXFORD 12 UNIT MOBILE #86 X 30 X 91CM (EACH)	OX30-0130
CYLINDER HOLDER TROLLEY - OXFORD C SIZE S/S (EACH)	OX30-3256
CYLINDER HOLDER TROLLEY - OXFORD C SIZE P/C (EACH)	OX30-3255
CYLINDER HOLDER TROLLEY - OXFORD D SIZE S/S (EACH)	OX30-3259
CYLINDER HOLDER TROLLEY - OXFORD D SIZE P/C (EACH)	OX30-3258
CYLINDER HOLDER TROLLEY - OXFORD G SIZE S/S (EACH)	OX30-3252
CYLINDER HOLDER TROLLEY - OXFORD G SIZE P/C (EACH)	OX30-3250
CYLINDER HOLDER - OXFORD DETACHABLE C SIZE S/S (EACH)	OX30-3257



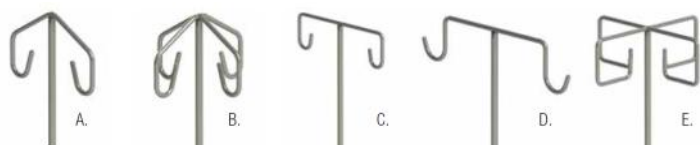
OX30-3256

OX30-0120

## IV Mobile Pole Stands

These IV Mobile Stands are available with:

- IV heads - 2 and 4 Prong Ramshead, Inside Hook, Outside Hook and 4-Prong Carol Pole
- Bases - Alloy, Alloy Weight, Nylon Base, Nylon Weight and Stackable Bases—65cm diameter with 5 wheels.
- 5cm standard wheels w/ Adjustable height IV Pole from 133 to 243cm.
- Options include Push Handle, Basket, Folding Shelf and Twin Pump Support.



IV Head	Alloy Base	Alloy Weighted	Nylon Base	Nylon Weighted	Stackable Base
A. Ramshead	CD10-3702	CD10-3708	CD10-3701	CD10-3720	CD10-3736
B. 4 prong ramshead	CD10-3706	CD10-3712	CD10-3699	CD10-3724	CD10-3737
C. Inside hook	CD10-3705	CD10-3715	CD10-3703	CD10-3723	CD10-3738
D. Outside hook	CD10-3704	CD10-3710	CD10-3700	CD10-3722	CD10-3739
E. 'Carol', 4 prong	CD10-3771	CD10-3716	CD10-3772	CD10-3725	CD10-3740

OX10-3702



# Laundry and Waste Trolleys

## Clean Linen Carts

The Clean Linen Trolley has been designed to move large amount of clean linen as required by healthcare staff.

- Light weight construction.
- Three shelves with 30cm clearance
- Push handle at both ends.
- Castors: 12.5cm standard swivel.
- Available in Stainless Steel or Powder Coated.
- Dimensions: 113 x 60 x 110cm



OX26-1300

## Mobile Linen Storage Carts

- Strong, lightweight fully welded construction
- Shelf clearance: 350mm (top shelf 1440mm high)
- Shelf feature: 4x sloping shelves at 2° and 3x lower shelves with centre partitions
- Perforated sheet metal on 3 sides
- Optional vinyl or clear PVC cover with zippers at the front (sold separate)
- Manufactured from 304 stainless steel or from mild steel with zinc coating
- Push handle
- Castors standard: 200mm heavy duty with 2x fixed swivel/2x braking and bumpers



OX55-3114

Description	Code
CLEAN LINEN TROLLEY - OXFORD S/S 3 LVL #113 X 60 X 110CM (EACH)	OX26-1300
CLEAN LINEN TROLLEY - OXFORD P/C 3 LVL #113 X 60 X 110CM (EACH)	OX55-1300
MOBILE LINEN STORAGE S/S 4 LVL #145 X 61 X 140CM (EACH)	OX23-3114
MOBILE LINEN STORAGE P/C 4 LVL #145 X 61 X 140CM (EACH)	OX55-3114

## Tallboy Linen Exchange Trolley

Linen Exchange Trolley has been innovatively designed for both the delivery of clean linen and collection of soiled linen in healthcare facilities. The design of the Linen Exchange Trolley allows use for bulk collection and linen storage.

### Model TLET1 Specifications:

- Tallboy Linen Exchange Trolley 1 with 3mm Galvanised Base Plate and 150mm Castors (2 fixed and 2 swivel) — 114 x 64 x 170cm
- Poly Shelf / Bin Front 1125 x 600 x 15mm
- Available in Blue, Yellow, Green and Red (Standard Colours—a wide range of colours are available for larger purchases).
- Options Available: Rip Stop PVC Clip-on Cover, Vertical Stainless Tubular Handle, Polyethylene Shelf/Bin Front, Powder Coated Wire Shelf, Stainless Steel Wire Shelf, Document Holder, Tow Hitch Kit and Galvanised Hanging Rail, custom marking options such as logo prints / serial number, etc.



TLET1 with Shelves to form bulk collection



TLET1 with Poly shelves for Linen Storage



TLET1 with PVC Cover

These LET are made to order a number of models are available with different configurations to suit different uses. If you have a specifications please contact customer service.

Description	Code
LINEN EXCHANGE TROLLEY— TALLBOY #1 W/ 2 POLYSHELF & GAL BASE PLATE AND 15CM WHEELS #115 X 64 X 170CM (EACH)	RTP-LET1-SET1

# Laundry and Waste Trolleys

## Linen Skips

The Linen Skips are available in Without Lid models - Single, Double or Triple and Foot Operated Lid - Single Double or Triple.

- Rectangular open ring accommodates a standard drawer string linen bag
- Base of skip designed to support the linen bag on removal.
- Wheels: 7cm standard single
- Available in Stainless Steel Only.



OX26-1681

Linen Skip Bags Specifications:

- Impermeable water-resistant sl300 machine washable polyester
- Pull drawcord with cord lock
- 5 colours— White, Red, Blue, Yellow and Green
- 750mm deep x 460mm diameter / 1450mm circumference



OX26-1645



OX26-1605



OX26-1655



OX26-1615



OX26-1680



OX26-1670

Description	Code
LINEN SKIP - OXFORD SINGLE W/O LID #35 X 45 x 87CM(EACH)	OX26-1605
LINEN SKIP - OXFORD DOUBLE W/O LID #35 X 45 x 87CM(EACH)	OX26-1615
LINEN SKIP - OXFORD TRIPLE W/O LID #35 X 45 x 87CM(EACH)	OX26-1670
LINEN SKIP - OXFORD SINGLE W/ FOOT OP. LID #38 X 59.5 X 87CM (EACH)	OX26-1645
LINEN SKIP - OXFORD DOUBLE W/ FOOT OP. LID #38 X 59.5 X 87CM (EACH)	OX26-1655
LINEN SKIP - OXFORD TRIPLE W/ FOOT OP. LID #38 X 59.5 X 87CM (EACH)	OX26-1680
LINEN SKIP BAG - OXFORD WHITE (EACH)	OX26-1660
LINEN SKIP BAG - OXFORD RED (EACH)	OX26-1661
LINEN SKIP BAG - OXFORD BLUE(EACH)	OX26-1662
LINEN SKIP BAG - OXFORD YELLOW (EACH)	OX26-1663
LINEN SKIP BAG - OXFORD GREEN (EACH)	OX26-1664
LINEN SKIP REPLACEMENT LID - OXFORD SLIMLINE (EACH)	OX26-1681

## Kerry Wet and Dry Laundry Trolley

The Kerry Wet and Dry Laundry Trolley is designed for use in institutional laundries.

- Galvanised plus rich zinc epoxy powder coated.
- Spring loaded base designed to minimise bending. Base hangs from 4 springs which are attached to the top of the trolley.
- Light weight.
- Full wraparound PVC bumper.
- Moist linen is able to breathe.
- Wheel: 12.5 cm Single Swivel on Small and 15cm Single Swivel on Medium and Large Trolleys.



KH550B—Wet & Dry Trolley with Spring Base

Description	Code
WET & DRY LINEN TROLLEY - KERRY SMALL P/C W/ BASE #80 X 60 X 80CM (EACH)	KH550B
WET & DRY LINEN TROLLEY - KERRY MEDIUM P/C W/ BASE #105 X 70 X 85CM (EACH)	KH551B
WET & DRY LINEN TROLLEY - KERRY LARGE P/C W/ SPRING BASE #125 X 70 X 85CM (EACH)	KH552B



W: [www.dbhealth.com.au](http://www.dbhealth.com.au)  
 E: [customerservice@denyer.com.au](mailto:customerservice@denyer.com.au)  
 P: (02) 9638 2100  
 ABN: 37 000 459 174

Suppliers of quality products to the Healthcare Industry est 1889. Australian Owned & Operated.



# Laundry and Waste Trolleys

## Rectangular Tub Moist Linen Trolleys

Rotoplas Rectangular Tub Moist Linen Trolley is designed for easy of use when a significant volume of Moist Linen is removed for cleaning. The moist linen trolley is made up of two main parts a 3mm galvanised dolly base with fitted wheels (2 fixed and 2 swivel 125mm rubber) and a polyurethane bin.

Options available include rising base:

- Coil Spring Rising Base with Poly Top - Spring Capacity of 25, 50, 75 or 100kg (also available with galvanised top).
- Hanging Spring Rising Base
- Bolt on Handles and Lids.

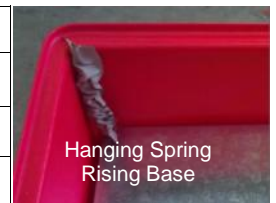


Powdercoated Handle



RTP-SRT250D

Description	Code
RECTULANGULAR TUB—150L TAPERED SIDES W/ MOBILE BASE #81 X 57 X 65CM (EACH)	RTP-TRT150D
RECTULANGULAR TUB—250L STRAIGHT SIDES W/ MOBILE BASE #115 X 63.5 X 67.5CM (EACH)	RTP-SRT250D
RECTULANGULAR TUB—340L STRAIGHT SIDES W/ MOBILE BASE #99 X 63.5 X 82CM (EACH)	RTP-SRT340D
RECTULANGULAR TUB—450L STRAIGHT SIDES W/ MOBILE BASE #123 X 73 X 82CM (EACH)	RTP-SRT450D
OPTION—COIL SPRING BASE W/ POLYTOP FOR 150L RECTANGULAR TUB (EACH)	RTP-CSBTRT150P
OPTION—COIL SPRING BASE W/ POLYTOP FOR 250L RECTANGULAR TUB (EACH)	RTP-CSBSRT250P
OPTION—COIL SPRING BASE W/ POLYTOP FOR 340L RECTANGULAR TUB (EACH)	RTP-CSBSRT340P
OPTION—COIL SPRING BASE W/ POLYTOP FOR 450L RECTANGULAR TUB (EACH)	RTP-CSBSRT450P



Hanging Spring Rising Base



Coil Spring Base w/ galvanised top

## Waste Bag Holders

The Waste Bag Holders have been designed as a mobile waste receptacle. Easy to operate.

- Designed for use with wide plastic bags. Bag holder dimensions: 35 x 23.5cm
- Solid platform to support bags.
- Incorporated clips holds any bag securely.

Waste Bag Size - NS9000Y is a short bag that the base does not touch the base plate so only a small amount can be put in the bag. Recommended Bag Size - 70cm wide x 90cm deep.

Description	Code
WASTE BAG HOLDER - OXFORD W/FOOT OP. LID S/S #28 x 41 x 81CM (EACH)	OX10-1000
WASTE BAGS - YELLOW 70 X 54CM 40UM LDPE (B/500)	NS9000Y



OX11-1000

# Medication Carts

## Dosage Medication Carts

The 30 and 50 Dosage Medication Trolley are designed to store medication in secure fashion. Each of the small 10cm include aluminium compartments (maximum of 12 compartments per drawer) to separate patient medication.

Features of this medication trolley are:

- Central locking
- 25cm deep bottom drawer
- Rail on 3 sides
- Drawer using full extension roller bearing runners that gives access to entire drawer
- Wheels: 12.5cm standard with 2 locking
- Available in Stainless Steel or Powder Coated in a range of colours.

30 Dosage - 3 x 10cm Drawers and 1 x 25cm Drawer

50 Dosage - 5 x 10cm Drawers and 1 x 25cm Drawer



OX18-4660



OX55-4560

Description	Code
MEDICATION TROLLEY - OXFORD 30 DOSAGE S/S W/ 4 DRAW #60 X 50 X 100CM (EACH)	OX18-4560
MEDICATION TROLLEY - OXFORD 50 DOSAGE S/S W/ 6 DRAW #60 X 50 X 100CM (EACH)	OX18-4660
MEDICATION TROLLEY - OXFORD 30 DOSAGE P/C W/ 4 DRAW #60 X 50 X 100CM (EACH)	OX55-4560
MEDICATION TROLLEY - OXFORD 50 DOSAGE P/C W/ 6 DRAW #60 X 50 X 100CM (EACH)	OX55-4660

## Unit Medication Carts

The 9-18, 12-24, 15-30 and 20-40 Unit Medication Trolley are designed to store medication in secure fashion. Each of the small 10cm drawers include aluminium compartments (maximum of 12 compartments per drawer for 60cm wide and 15 compartments for 75cm wide Carts) to separate patient medication. Additionally includes Stainless Steel top with insert tray, document basket and lift-up side shelf

- Central locking
- Rail on 2 sides
- Drawers using full extension roller bearing runners that gives access to entire drawer (40kg capacity),
- Wheels: 12.5cm standard with 2 locking.
- Available in Powder Coat from a range of colours.

9-18 Unit - 3 x 10cm Drawer, 1 x 20cm and 1 x 25cm Drawer at bottom

12-24 Unit - 3 x 10cm Drawer, 1 x 20cm and 1 x 25cm Drawer at bottom

15-30 Unit - 5 x 10cm Drawer and 1 x 25cm Drawer at bottom

20-40 Unit - 5 x 10cm Drawer and 1 x 25cm Drawer at bottom



OX55-1224



OX55-1530

Description	Code
MEDICATION TROLLEY - OXFORD 9-18 UNIT P/C #60 X 50 X 100CM (EACH)	OX55-0918
MEDICATION TROLLEY - OXFORD 12-24 UNIT P/C #75 X 50 X 100CM (EACH)	OX55-1224
MEDICATION TROLLEY - OXFORD 15-30 UNIT P/C #60 X 50 X 100CM (EACH)	OX55-1530
MEDICATION TROLLEY - OXFORD 20-40 UNIT P/C #75 X 50 X 100CM (EACH)	OX55-2040



W: [www.dbhealth.com.au](http://www.dbhealth.com.au)  
 E: [customerservice@denyer.com.au](mailto:customerservice@denyer.com.au)  
 P: (02) 9638 2100  
 ABN: 37 000 459 174

Suppliers of quality products to the Healthcare Industry est 1889. Australian Owned & Operated.

# Medication Carts

## Half Size Rounds Carts

The ½ Size Rounds Medication Trolleys are designed for very small group of patient requiring medication.

- Lockable sloping front compartment
- Drawer 20cm deep keyed alike as front sloping compartment
- Lift up side shelf 30cm long
- Push handle on one side.
- Available in Stainless Steel or Powder Coated in variety of colours.



OX55-4560

Description	Code
ROUNDS TROLLEY - OXFORD 1/2 SIZE S/S W/ DRAWER #50 X 50 X 119CM (EACH)	OX18-9670
ROUNDS TROLLEY - OXFORD 1/2 SIZE P/C W/ DRAWER #50 X 50 X 119CM (EACH)	OX55-9670

## Kerry Webster Medication Carts

The Kerry Flexicart Webster 2 Drawers and 3 Drawers Medication Trolley are designed to store medication packaged in Webster drug system in secure fashion.

- 2 or 3 drawers which are all 26cm high which allows the webster packs to be stored upright in each drawer.
- Central locking, Push handle
- Full wrap-around bumper
- Wheels: 12.5cm heavy duty swivel
- Choice of ABS top (plain or pill cup extrusion).
- Available with a variety of options - below are 3 common options that are selected with these Carts
- Available in Epoxy Coated Only from a range of colours.

Description	Code
MEDICATION TROLLEY - KERRY WEBSTER FLEXICART 3 DRAWER P/C #63.5 X 48.5 X 104.5CM (EACH)	KH220WEB
MEDICATION TROLLEY - KERRY WEBSTER FLEXICART 2 DRAWER P/C #63.5 X 48.5 X 101.5CM (EACH)	KH222WEB
OPTION - KERRY BASKET (EACH)	KH22B
OPTION - KERRY FOLDING SHELF W/ FLAT TOP (EACH)	KH22FSF
OPTION - KERRY WASTE BIN (EACH)	KH22W



KH220WEB with options folding shelf and waste bin



KH222WEB with options folding shelf and waste bin

# Procedure Carts

## Emergency Crash Cart

The Emergency Crash Cart is a durable and fully featured Emergency Cart ready for a range of possibilities.

- Rails: 3 sides standard
- Drawer: 3 x 10cm, 1 x 15cm and 1 x 25cm deep that use full extension roller bearing runners that gives access to entire drawer.
- Top 3 drawer have removable drawer dividers.
- Lift-Up Side Shelf: 30 (L) x 50cm (W).
- Wheels: 12.5cm standard single with 2 locking.
- Central Locking - available with key lock or key lock and tamper seal.
- Adjustable IV Pole, Oxygen Cylinder Holder for C-size and Backboard.
- Powder Coated with Red Body and White Drawers



OX55-4471

Description	Code
EMERGENCY TROLLEY - OXFORD CRASH CART P/C #71 X 50 X 94CM (EACH)	OX55-4471
OPTION - OXFORD ROTATING TRAY FOR DEFIB (EACH)	OX60-0320
TAMPER SEAL PADLOCK - OXFORD #DISPOSABLE (B/100)	OX60-5160

## Paediatric NICU Cart

Strong, fully welded construction with S/Steel recessed top surface.

- Rail on rear side standard and removable double maxi-bin rails
- Drawers: 1x 100, 9x 75mm deep with 40kg capacity on full extension slides
- Keyed central locking drawers
- Top drawer with 3x full width divider storage trays, 2nd drawer without divider storage trays and 3rd -10th drawers: with 2x full width divider storage trays
- Standard colour: Broselew Hinkle trolley and drawers
- 350 x 550mm fold down side shelf
- 2x rear IV sockets with 760mm IV ramshead pole
- Castor features: 125mm single rubber with 2x braking with bumpers



OX55-4301

Description	Code
ICU TROLLEY - OXFORD PAEDIATRIC EMERGENCY P/C # 80 x 50 x 104.5CM (EACH)	OX55-4301

## Endoscopy Carts

The range of Endoscopy Carts is designed to provide safe storage of your valuable endoscopy equipment.

- Rails: 3 sides standard.
- Drawers: Heavy duty that use full extension roller bearing runners that gives access to entire drawer with 40kg capacity.
- Wheels: 12.5cm standard single with 2 locking.
- Available in Stainless Steel only



OX18-5980



OX18-5710



OX18-4210

Description	Code
ENDOSCOPY TROLLEY - OXFORD S/S W/6 DRAWS #90 X 50 X 90CM (EACH)	OX18-6290
ENDOSCOPY TROLLEY - OXFORD S/S W/ 4 DRAWS #100 X 50 X 90CM(EACH)	OX18-4210
ENDOSCOPY TROLLEY - OXFORD S/S W/ 4 DRAWERS #100 X 50 X 90CM (EACH)	OX18-5980
ENDOSCOPY TROLLEY - OXFORD ST LUKES S/S W/ 5 DRAWERS #100 X 50 X 90CM(EACH)	OX18-5710



OX18-6290



# Procedure Carts

## General Purpose Equipment Cart

The General Purpose Equipment Cart is designed to provide safe storage of your valuable medical equipment.

- Rails: 3 sides standard.
- Drawers: 5 x 10cm and 1 x 20cm deep that use full extension roller bearing runners
- Wheels: 12.5cm standard single with 2 locking.
- Central Locking. Corner Bumpers.
- Available in Stainless Steel or Powder Coated from a range of colours.

Description	Code
EQUIPMENT TROLLEY - OXFORD GENERAL PURPOSE P/C #105 X 50 X 91(EACH)	OX55-4300
EQUIPMENT TROLLEY - OXFORD GENERAL PURPOSE S/S #105 X 50 X 91(EACH)	OX18-4300



## ICU Recovery Cart

The ICU Recovery Cart is designed for use in ICU to be used as a mobile table especially when required at night.

- Drawers: 5 x 10cm and 1 x 25cm deep.
- Tilt adjusted writing platform.
- Wheels: 12.5cm standard single with 2 locking.
- Available in Stainless Steel and Powder Coated

Description	Code
ICU RECOVERY TROLLEY - OXFORD S/S W/ 6 DRAWS #60 X 50 X 100CM (EACH)	OX25-5100
ICU RECOVERY TROLLEY - OXFORD P/C W/ 6 DRAWS #60 X 50 X 100CM (EACH)	OX55-5100



## ICU Workstation - St Vincent's

The ICU Workstation is designed for use in ICU specifically to hold essential supplies.

- Drawers Left: 2 x 12.5cm, 1 x 16.5cm and 1 x 25cm deep.
- Drawers Right: 2 x 12.5cm
- Shelves Right: 1 x 15cm and 1 x 24cm clearance
- Double Maxi Bin Rail (Bins not included)
- Push Handle and Sharp container bracket
- Wheels: 12.5cm standard single with 2 locking.
- Available in Powder Coat Only from a range of colours.

Description	Code
ICU WORKSTATION - OXFORD ST VINCENTS P/C #110 X 60 X 90CM (EACH)	OX55-5200



## ICU Basket Trolleys

- Stainless Steel Construction design to hold nylon coated baskets for storage in ICU Wards.
- Available in Single, Double and Double Enclosed styles.
- Basket Sizes: 43 x 53 x 8.5cm and 43 x 53 x 18.5cm
- Push Handle on Double Enclosed Basket Trolley only.
- Wheels: 12.5cm standard single with 2 locking.
- Available in Powder Coat Only from range of colours.



Description	Code
ICU BASKET TROLLEY - OXFORD S/S SINGLE #49 X 54 X 100CM (EACH)	OX25-1000
ICU BASKET TROLLEY - OXFORD S/S DOUBLE #96 X 54 X 100CM (EACH)	OX25-2000
ICU BASKET TROLLEY - OXFORD S/S DOUBLE ENCLOSED #96 X 50 X 90CM (EACH)	OX25-3000



# Procedure Carts

## Plaster Cart

The Plaster Cart is designed for use in busy orthopaedic area and with some unique features can provide significant benefits to staff working in this area.

- Drawer: 5 x 15cm and 1 x 30cm deep with the drawer configured to make best use of the space available.
- Lift up side shelf and Waste Bin.
- Recessed top to easily contain the mess.
- Large bowl attached to one side of the trolley for easy hydration of the plaster rolls.
- Wheels: 12.5cm standard single with 2 locking
- Available in Stainless Steel



OX18-4890

Description	Code
PLASTER TROLLEY - OXFORD S/S W/ 6 DRAWERS #90 X 60 X 84CM (EACH)	OX18-4890

## Resuscitation Carts

The Range of Resuscitation Carts are designed for use in storage of critical supplies for resuscitation as well as equipment.

- Rails: 3 sides standard.
- Bottom shelf
- Pullup side shelf
- Wheels: 12.5cm standard with 2 locking
- Available in Stainless Steel only



OX18-5360



OX18-5080



OX18-6480

Description	Code
RESUSCITATION TROLLEY - OXFORD 2 LVL S/S W/3 DRAW & SIDE SHELF#60 X 50 X 90CM (EACH)	OX18-5360
RESUSCITATION TROLLEY - OXFORD 2 LVL S/S W/5 DRAW & SIDE SHELF #80 X 50 X 90CM (EACH)	OX18-5080
RESUSCITATION TROLLEY - OXFORD 2 LVL S/S W/5 DRAW, DOUBLE MAXIBIN RAIL & SIDE SHELF #80 X 50 X 90CM (EACH)	OX18-6480

## Urology Cart

- Strong, fully welded construction
- Rails on 3 sides standard
- Drawer features: lightweight with 40kg capacity full extension slides
- Drawers: 2x 100, 2x 200 and 1x 300mm deep
- Manufactured from 304 stainless steel or from mild steel with zinc coating
- Standard colour: blue weave trolley and pearl white drawers
- Castor features: 125mm single rubber with 2x braking with bumpers



OX55-4410

Description	Code
UROLOGY TROLLEY - OXFORD S/S W/ 5 DRAWS #105 X 55 X 112CM (EACH)	OX18-4410
UROLOGY TROLLEY - OXFORD P/C W/ 5 DRAWS #105 X 55 X 112CM (EACH)	OX55-4410

# Operating Theatre Carts

## Anaesthetic Carts

The Range of Anaesthetic Carts are designed to meet the requirements for Anaesthetics.

- Manufactured from 304 grade stainless steel to a satin finish
- Central locking drawer with full extension roller bearing runners that gives access to entire drawer - 40kg capacity
- Rails: 3 sides standard
- Wheels: 12.5cm standard single with 2 locking
- Available in Stainless Steel or Powder coated from A range of colours



Description	Code	Description	Code
ANAESTHETIC TROLLEY - OXFORD S/S W/ 6 DRAW & SHELVE #90 X 50 X 90CM (EACH)	OX18-4090	ANAESTHETIC TROLLEY - OXFORD P/C W/ 6 DRAW & SHELVE #90 X 50 X 90CM (EACH)	OX55-4090
ANAESTHETIC TROLLEY - OXFORD S/S W/ 6 DRAW & TOP SHELVE #60 X 50 X 90CM (EACH)	OX18-4070	ANAESTHETIC TROLLEY - OXFORD P/C W/ 6 DRAW & TOP SHELVE #60 X 50 X 90CM (EACH)	OX55-4070
ANAESTHETIC TROLLEY - OXFORD S/S W/ 5 DRAW #60 X 50 X 90CM (EACH)	OX18-4060	ANAESTHETIC TROLLEY - OXFORD P/C W/ 5 DRAW #60 X 50 X 90CM (EACH)	OX55-4060
ANAESTHETIC TROLLEY - OXFORD S/S W/ 4 DRAW #60 X 50 X 90CM(EACH)	OX18-4065	ANAESTHETIC TROLLEY - OXFORD P/C W/ 4 DRAW #60 X 50 X 90CM(EACH)	OX55-4065

## Mayo Instrument Tables

The Mayo Instrument Tables are designed to be height adjustable, table top rotatable or non-rotatable and mobile. Available in 2 styles with 2 sizes small and large they are designed depending on the requirements of the user.

- Height Adjustment: 90 - 130cm.
- Tray Dimensions - Small: 40 (L) x 55 (W) x 2cm (H).
- Tray Dimensions - Large: 70 (L) x 50 (W) x 3cm (H).
- Manufactured from 304 grade stainless steel to a satin finish.
- Rotating Top - Wheels: 3 castors - 7cm standard.
- Non-Rotating Top - Wheels: 4 castors - 7cm standard.



Description	Code
MAYO INSTRUMENT TABLE - OXFORD SML W/ROT. TOP #60 X 67 X 90-130CM (EACH)	OX10-3600
MAYO INSTRUMENT TABLE - OXFORD LGE W/ROT. TOP #60 X 95 X 90-130CM (EACH)	OX10-3612
MAYO INSTRUMENT TABLE - OXFORD SML W/NON-ROT #51 X 60 X 90-130CM (EACH)	OX10-3602
MAYO INSTRUMENT TABLE - OXFORD LGE W/NON-ROT #51 X 70 X 90-130CM (EACH)	OX10-3615



# Operating Theatre Carts

## Instrument Tables, Arm Table, Instrument Over-Table and Gynae Table

The Nest of Instrument Tables comprise of 3 stainless steel instrument tables. These tables are available as either individually or as a nest of 3 tables.

- The features of these tables are:
- Wheels: 7cm standard.
- Can be stacked to minimise space usage.

The Instrument Over-Table, Gynae Table and Arm Table are height adjustable Stainless Steel tables.

- The Arm Table includes radiolucent top.
- The Gynae Table includes one curved side.
- Wheels: 12.5cm standard with 2 locking
- Height adjustment with hand tightened knobs for each leg.



OX19-2790



OX19-2675



OX18-2500



OX19-2480

Description	Code
INSTRUMENT TABLE - OXFORD 1 LVL NEST S/S (SET)	OX18-2500
INSTRUMENT TABLE - OXFORD 1 LVL S/S LARGE #105 X 52 X 92CM (EACH)	OX18-2510
INSTRUMENT TABLE - OXFORD 1 LVL S/S MEDIUM #95 X 50 X 88CM (EACH)	OX18-2595
INSTRUMENT TABLE - OXFORD 1 LVL S/S SMALL #85 X 48 X 84CM (EACH)	OX18-2585
ARM TABLE - OXFORD RADIOLUCENT TOP #75 X 40 X 75-119CM (EACH)	OX19-2675
INSTRUMENT OVERTABLE - OXFORD ADJ. S/S #90 X 50 X 75-125CM (EACH)	OX19-2790
GYNAE TABLE - OXFORD S/S #80 X 45 X 70-125CM (EACH)	OX19-2480

## Bowl, Bucket and Kick Bucket Stands

The Bowl Stands are designed to hold either 1 or 2 stainless steel bowls (30 or 35cm diameter bowls).

- These stands are mounted on a 5 leg base with 5 wheels.
- Only available in stainless steel.

The Bucket Stand is designed to provide a stable stand for a stainless steel bucket.

- The stand base has 5 legs and only being 60cm high is very stable.

The Kick Bucket Stand is designed to provide a stable stand for a range of round buckets.

- The stand has a diameter of 30cm and a height of 37.5cm.



OX10-3936



OX10-3930



OX10-3820



OX10-3840

Description	Code
BOWL STAND - OXFORD SINGLE 30CM S/S (EACH)	OX10-3930
BOWL STAND - OXFORD DOUBLE 30CM S/S (EACH)	OX10-3931
BOWL STAND - OXFORD SINGLE 35CM S/S (EACH)	OX10-3935
BOWL STAND - OXFORD DOUBLE 35CM S/S (EACH)	OX10-3936
BUCKET STAND - OXFORD STD S/S W/ ALLOY BASE (EACH)	OX10-3830
BUCKET STAND - OXFORD STD S/S W/ NYLON BASE (EACH)	OX10-3840
BUCKET STAND - OXFORD KICK BASE S/S (EACH)	OX10-3820



# Operating Theatre Carts

## Surgeon's Step Stool and Wall Mounted Shoe Racks

The Surgeon's Step Stool is made from stainless steel tubular frame with non-slip aluminium tread surface. Dimensions are customisable.

The Wall Mounted Shoe Racks are made from stainless steel and available in 12 or 18 pair sizes.



OX10-3850



OX10-3860



OX40-1090



OX40-1100

Description	Code
FOOT STOOL - OXFORD SURGEON'S SINGLE #40 X 30 X 20 (EACH)	OX10-3850
FOOT STOOL - OXFORD SURGEON'S SINGLE #70 X 30 X 20CM (EACH)	OX10-3860
FOOT STOOL - OXFORD SURGEON'S DOUBLE #70 X 30 X 40CM (EACH)	OX10-3870
SHOE RACK - OXFORD 12 PAIR S/S #69 X 106CM (EACH)	OX40-1090
SHOE RACK - OXFORD 18 PAIR S/S #69 X 142CM (EACH)	OX40-1100



OX10-3870

Db Health has a extensive range of Surgical products and supplies. Our product range cover Sterilisable Hollowware including Kidney Dishes to Theatre bowls, AMS Operating Surgical Equipment (scalpels, forceps, pincers, scissors) and Diagnostic Instruments from the leading manufacturers.

Skin and Laboratory Markers



Disposable and Reusable instrument



Surgical Headlights



WarwickWare Hollowware



# CSSD Tables and Carts

## CSSD Tables

CSSD Tables are manufactured from 304 grade stainless steel to a satin finish, each leg has a nylon cap and one is height adjustable.

Options available include:  
Wheels



## CSSD Prep Table

CSSD Prep Tables are manufactured from 304 grade stainless steel to a satin finish, each leg has a nylon cap and one is height adjustable, bottom shelf and top section with top shelf and rail for reels of sterilisation pouches.

Options available include:  
Wheels



Description	Code
CSSD TABLE - OXFORD S/S #110 X 60 X 86CM (EACH)	OX18-2211
CSSD TABLE - OXFORD S/S #170 X 60 X 86CM (EACH)	OX18-2217
CSSD TABLE - OXFORD S/S #230 X 60 X 86CM (EACH)	OX18-2223
CSSD TABLE - OXFORD S/S #110 X 75 X 86CM (EACH)	OX18-2311
CSSD TABLE - OXFORD S/S #170 X 75 X 86CM (EACH)	OX18-2317
CSSD TABLE - OXFORD S/S #230 X 75 X 86CM (EACH)	OX18-2323
CSSD PREP TABLE - OXFORD S/S #110 X 60 X 86CM (EACH)	OX19-5316

## Premium Case Cart

- Strong, fully welded construction
- 3x slide out wire shelves
- 2x 270° fold back doors with hold back and closed stay latches
- Twin 270° fold back doors
- Trolley finishes: stainless steel with stain finish
- Manufactured from 304 stainless steel
- Castors standard: 150mm stainless steel hi-temp, 2x plain and 2x fixed



## Bedpan and Bottle Rack

The Bedpan and Bottle rack is a Stainless Steel Rack designed to fit bedpans and urine bottles. Can be wall mounted or seat on a desktop.

Description	Code
BEDPAN & BOTTLE RACK - OXFORD S/S 4 UNIT #54 X 26 X 52CM (EACH)	OX30-1020
BEDPAN & BOTTLE RACK - OXFORD S/S 6 UNIT #78 X 26 X 52CM (EACH)	OX30-1030
CASE CART - PREMIUM #87 X 680 X 1180CM (EACH)	OX20-0014



# Maternity Bassinet Trolleys and Cots

## Baby Bassinet Trolley

The Baby Bassinet Trolley is available in 2 sizes Single or Twins.

- Mattress base height: 87.5 cm.
- Wheels: 7.5cm standard with 2 locking.
- Clear acrylic bassinet tub and 2 storage trays.
- Trendelenberg and Reverse Trendelenberg positioning.
- 5cm Mediflex covered mattress.
- Available in Powder Coated and Stainless Steel



Description	Code
BASSINET TRLY - OXFORD SINGLE S/S #80 X 42 X 106.5CM (EACH)	OX20-3815
BASSINET TRLY - OXFORD SINGLE P/C #80 X 42 X 106.5CM (EACH)	OX20-3812
BASSINET TRLY - OXFORD TWINS S/S #80 X 64 X 106.5CM (EACH)	OX20-3842
BASSINET TRLY - OXFORD TWINS P/C #80 X 42 X 106.5CM (EACH)	OX20-3840

Description	Code
BASSINETT MATTRESS - OXFORD SINGLE MEDIFLEX #66 X 32 X 5CM (EACH)	OX20-4100
BASSINET ACRYLIC TUB - OXFORD SINGLE #71 X 36 X 19-29CM (EACH)	OX20-4000
BASSINET TRAY - OXFORD WHITE PLASTIC #36 X 32 X 8CM (EACH)	OX20-4200
BASSINET ACRYLIC TUB - OXFORD TWINS (EACH)	OX20-4001
BASSINETT MATTRESS - OXFORD TWINS MEDIFLEX #66 X 50 X 5CM (EACH)	OX20-4101

## Hi-Lo Baby Bath

The Hi-Lo Baby Bath Trolley is designed specifically for the purpose of giving baby baths without the need to empty heavy bathtubs and to be able to adjust the bath to a comfortable height. Electronically adjustable height from 63cm to 93cm

- Wheels: 10 cm standard with 2 locking.
- Clear acrylic bassinet single tub with drainage and plug.
- Controlled via Foot pedal control.
- Available in Powder Coated Only.



## Single Bassinette Bath Trolley

The Single Bassinette Bath Trolleys provides a cost effective alternative to Baby Baths without height adjustment.

- Bassinette features: clear acrylic twin tub with plug/waste drain hose and valve
- Tray feature: removable 2 x 390 x 350 x 80mm deep, white acrylic
- Tub height: 820mm high
- Manufactured from 304 stainless steel tube
- Castors standard: 75mm single rubber with 2x braking



Description	Code
BABY BATH - OXFORD HI-LO (EACH)	OX20-3860
BASSINET BATH TRLY - OXFORD SINGLE S/S W/ TUBING FOR BATH (EACH)	OX20-3850



# Maternity Bassinet Trolleys and Cots

## Mobile Cots

The range of Mobile Cot are designed and manufactured to meet AS2130.

- Light weight side rails with squeeze grip handle for easy single handed operation.
- On each corner Socket with adjustable knob for either IV Poles / Detachable C Size Oxygen Bottle Holder can placed as required (IV Poles and Oxygen Bottle Holder is optional).
- Bottom shelf for additional storage.
- 10cm wall bumpers on each corners.
- Trendelenberg Angle Gauge
- Wheels: 12.5cm standard with 2 locking (diagonally positioned - expect for King Cot).
- Mediflex covered mattress—7.5cm high

	Trendelenberg Adjust	Mattress Height	End Panels	Extras
Neo-Natal Cot	Both Ends Manual	86cm Height	Fixed end panels	
Premier Cot	Both Ends Manual	86cm Height	Fixed end panels	
King Cot	Both Ends Electrical	95.5cm Height	Fixed end panels	Central Locking Castors
Quattro Cot	Both Ends Manual	86cm Height	Removable end panels	
King Quattro Cot	Both Ends Electrical	95.5cm Height	Removable end panels	Central Locking Castors



OX20-3802



OX20-3811



OX20-3800



OX20-3804

## Cot Accessories

Include Telescopic IV Poles 76cm long with Ramshead and Detachable C Size Oxygen Bottle Holders.



OX13-3012

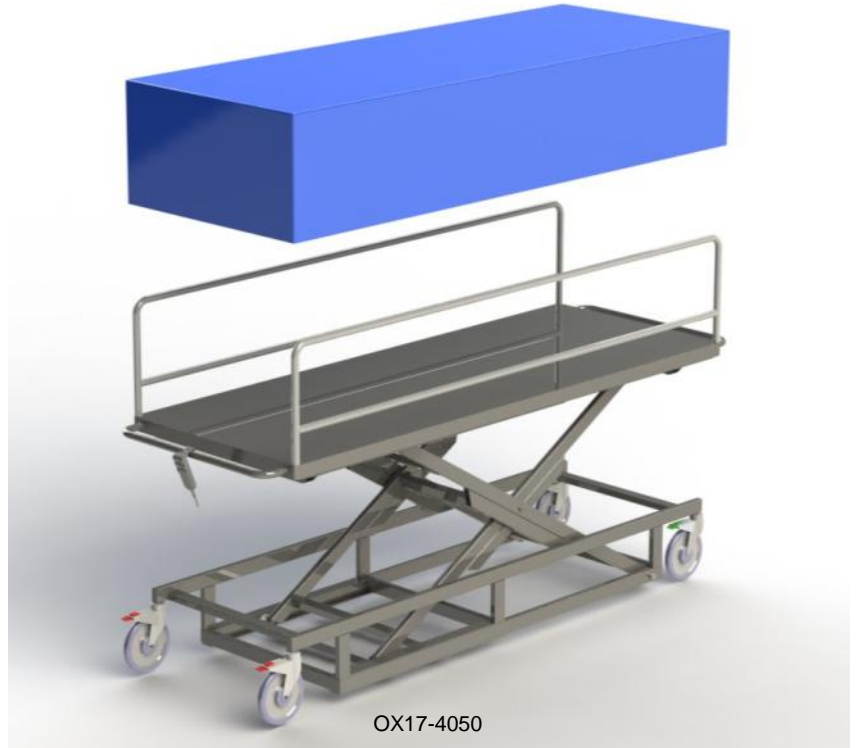
Description	Code
MOBILE COT - OXFORD NEO-NATAL P/C #102 X 68.5 X 145CM (EACH)	OX20-3802
MOBILE COT - OXFORD PREMIER P/C #143 X 79 X 145CM (EACH)	OX20-3800
MOBILE COT - OXFORD KING ELECTRIC P/C #143 X 79 X 152.5CM (EACH)	OX20-3804
MOBILE COT - OXFORD QUATTRO P/C #143 X 79 X 145CM (EACH)	OX20-3811
MOBILE COT - OXFORD KING ELECTRIC QUATTRO P/C #143 X 79 X 152.5CM (EACH)	OX20-3818



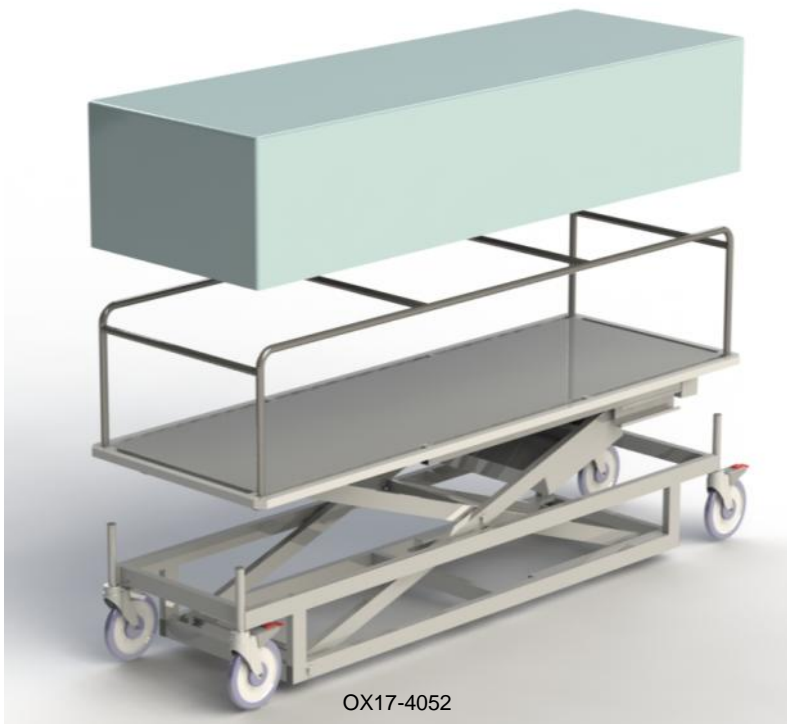
# Mortuary Trolleys

## Standard Size Mortuary Trolley with Electric Height Adjustment

- Stainless Steel
- 2080 x 760 x 450 - 1200mm High
- Standard Size Bed
- Electronic Adjustable Height With Built In Charger & Batteries
- Removable Side Rails With Concealment Cover
- No Head or Foot End Rail
- No Adjustable Height Back Rest
- Castors 200mm Standard, 3 Locking & 1 Directional
- 180kg Lift Capacity (SWL)
- 175kgs Gross



## Bariatric Size Mortuary Trolley with Electric Height Adjustment



- Stainless Steel
- 2150 x 806 x 450 - 1200mm High
- Bariatric Size Bed
- Electronic Adjustable Height With Built In Charger & Batteries
- Removable Side Rails With Concealment Cover
- No Head or Foot End Rail
- No Adjustable Head End
- Castors 200mm Standard, 3 Locking & 1 Directional
- 250kg Lift Capacity (SWL)
- 210kgs Gross

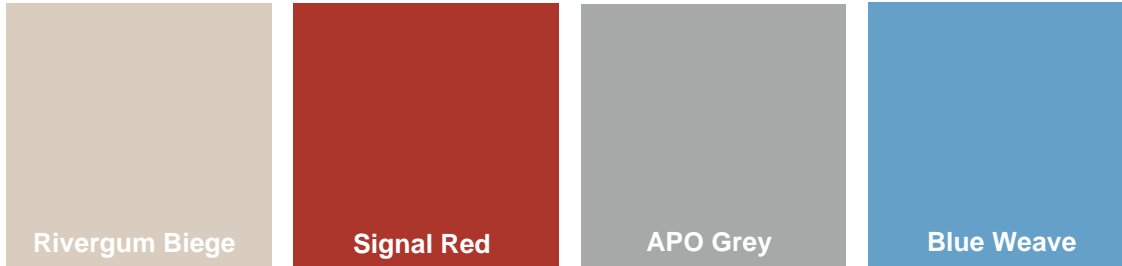
Description	Code
MORTUARY TROLLEY - OXFORD S/S ELECTRIC W/ CONCEALMENT COVER (EACH)	OX17-4050
MORTUARY TROLLEY - OXFORD S/S ELECTRIC BARIATRIC W/ CONCEALMENT COVER (EACH)	OX17-4052

# Colour Options for Medical Carts

## Oxford Powdercoat Colours

Below are the colours for Oxford Products along with white gloss. Please colours are approximate representations of the final powdercoating colour.

When selecting colour please advise drawer colour and body colour.



Standard Powdercoat Colours



Non-Standard Powdercoat Colours (additional cost may apply)

## Flexicart Powdercoat Colours

Below are the standard colours for Flexicart Medication Trolleys along with White and Signal Red.

